



MACHINES & TOOLING

CATALOGUE 2024



ASMUSS
STEEL & FLOW CONTROL

THE SMARTER CHOICE.

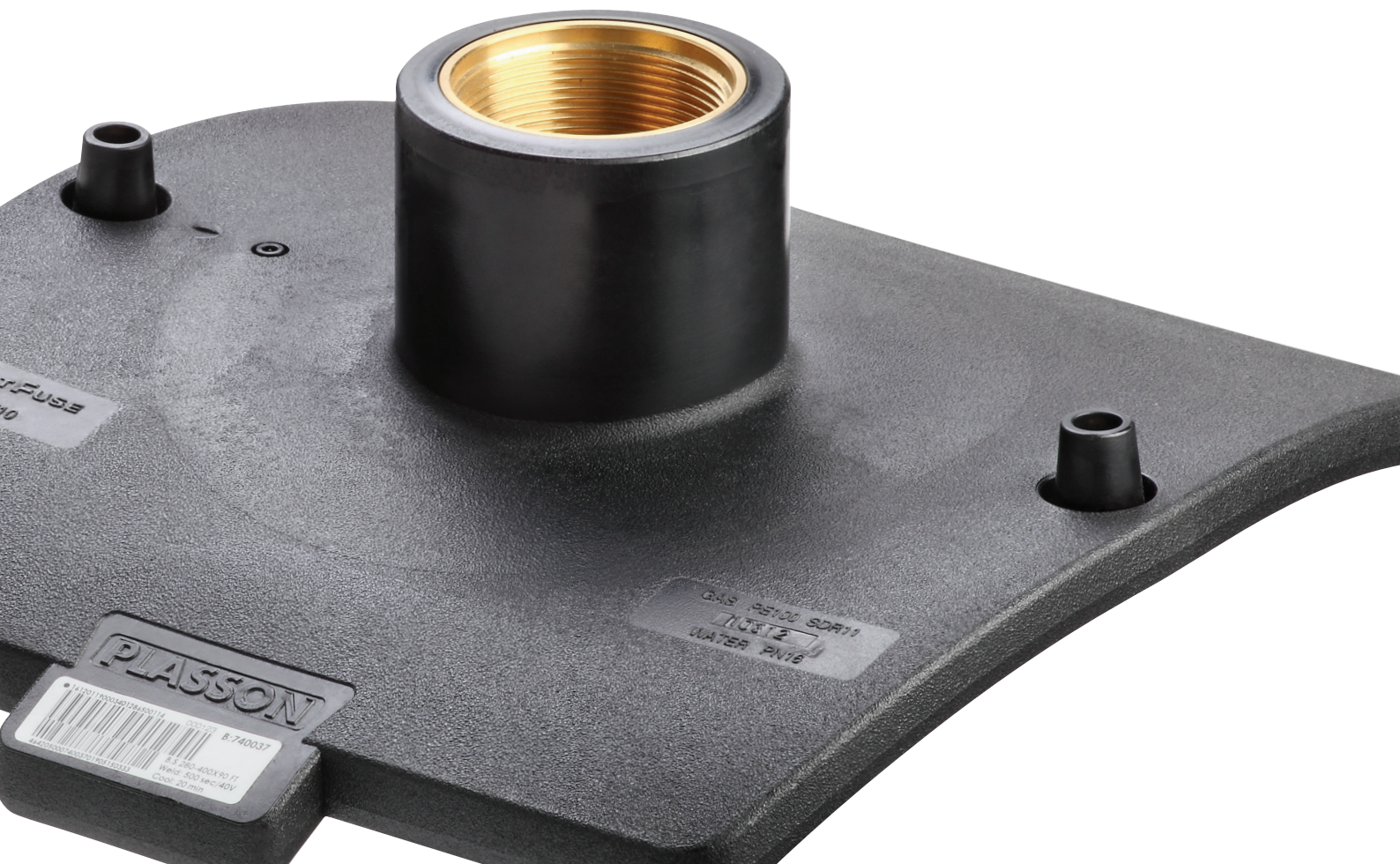


ASMUSS
STEEL & FLOW CONTROL

MACHINES & TOOLING

For the most up-to-date pricing and information, please Contact us on:

E **flowcontrol@asmuss.co.nz**



content

OUR STORY NATIONWIDE PRESENCE	04
--	----

ELECTROFUSION MACHINES

CONTROL BOX COMPARISON TABLE	6
ELECTROFUSION MACHINES	7
SMARTFUSE APP	8
PLASSON CONTROL BOX	9
SMARTFUSE 355	9
ELECTROFUSION MACHINES	10

TOOLS

PE PEELING TOOLS	11
ALIGNMENT TOOLS	13
WELDING TERMINAL PIN ADAPTORS	14
SQUEEZE TOOLS	14
REROUNDING CLAMPS AND TOOLS	15
PLASSON TOPLOAD SADDLE INSTALLATION TOOLING	16
HOT TAPPING TOOL	18
TOOLS FOR WASTEWATER SADDLES	18
RULLING AND MARKING	19
CUTTING TOOLS	20

PE PRESSURE BUTT FUSION MACHINES

PLASSON BUTT FUSION MACHINES (CNC)	21
PLASSON BUTT FUSION MACHINES (CNC) - FEATURES	22
PLASSON BUTT FUSION TOOLS	23
PLASSON MANUAL BUTT FUSION MACHINE	24
PLASSON MANUAL BUTT FUSION MACHINE- FEATURES	25

GEBERIT

GEBERIT ELECTROFUSION MACHINE - DRAINAGE	26
PE PEELING TOOL	26
BUTT WELDING TOOLS	27

WHAT WE DO & WHAT MAKES US DIFFERENT	28
---	----

SERVICING AND CALIBRATION	30
----------------------------------	----



OUR STORY.

A successful New Zealand-owned business, Asmuss has been trusted to deliver for over 100 years.

Founded in 1920, the Asmuss Group has supplied product to many of New Zealand's biggest industrial and construction projects and is one of the largest privately owned companies in its field.

A focus on quality products, technical excellence and exceptional customer service has always been our cornerstone philosophy.

We believe business longevity is about having a true partnership with our valued suppliers and customers — to ultimately maintain consistency and quality, and succeed together.

ONE COMPANY, MANY SOLUTIONS.

Prior to 2020 Asmuss traded nationwide under four separate steel and flow control specialist brands.

To make it easier and more simple for our customers to get everything they need from one place, we've recently brought it all together within one company.

This means we will deliver a greater range of products and provide solutions faster — but customers can be assured of continued availability to the specialist Asmuss teams they have come to know and trust.

THE SMARTER CHOICE.

NATIONWIDE PRESENCE.

With branches strategically located throughout New Zealand, we provide an integrated approach by coordinating our resources across all sites to ensure our customers receive optimal product combinations, tailored to meet specific needs.



THE SMARTER CHOICE.

ELECTROFUSION MACHINES

CONTROL BOX COMPARISON TABLE

Features	SmartFuse 355	Polymatic Plus USB	PolyControl Plus V2
Fitting size	Up to 355mm	Up to 800mm (Sizes above 630mm require cool down time between welds)	All Sizes
Welds	Plasson Only (Able to weld other brands via SmartFuse App)	Any Brands	Any Brands
Weld Tip Size	4.7/4.0mm Universal	4.7/4.0mm Universal	4.7/4.0mm Universal
Bluetooth	Y	Y	Y
Plasson SmartFuse Mode (Automatic)	Y	Y	Y
Manual Input of Welding Time	N	Y	Y
Welding Voltage	40V	8-48V	8-48V
Output Current	110A Max (30 Nominal)	110A Max (40 Nominal)	110A Max (85 Nominal)
Data Recording	Y with App	Y	Y
Multilingual Display Messages	Y	Y	Y
Error Messages In Plain Text	Y	Y	Y
Adjustable Display Contrast	Y	Y	Y
Dynamic Process Supervision	Y	Y	Y
Auto Software Check	Y	Y	Y
Resistance Check	Y	Y	Y
Ramped Start	Y	Y	Y
Service Message	After 200 Hours or 12 Months	After 200 Hours or 12 Months	After 200 Hours or 12 Months
Barcode Reading Capability	Y with App	Y	Y
Fitting And Operator Traceability	Y with App	Y	Y
Earth Pin	15A	15A	15A
Active Cooling	N	N	Y

MINIMUM REQUIRED GENERATOR OUTPUT POWER

240 V, 50Hz, 1-PHASE.

FITTING DIAMETER	OUTPUT POWER
20-160mm	3.2 kW
180-500mm	4.5 kW (Mechanically Controlled) 5 KW (Electronically Controlled)
> 500mm	6.5 kW (Mechanically Controlled) 7.5 kW (Electronically Controlled)

EXTENSION

CONDUCTOR CROSS-SECTION

Up to 20m	3m x 1.5mm ²
20m - 50m	3m x 2.5mm ²

***Detailed specifications for each model available from Plasson.**

ELECTROFUSION MACHINES

ELECTROFUSION MACHINES

FEATURES	POLYCODE 180	POLYCODE 400
GENERAL		
Output voltage (V)	8 to 48 AC	8 to 48 AC
Data recording	Yes	Yes
Power (60 % ON time) according to ISO 12176-2	1030 W (25.6 A)	2050 W (55.9 A)
Operating temperature range (°C)	-10 to +50	-10 to +50
International protection	IP54	IP54
Appliance class	1	1
Conformity	CE	CE
ISO 12176-2 Class - classification	P ₂ 2 U S ₁ V AK D X	P ₂ 3 U S ₁ V AK D X
CASING/DISPLAY		
Material	Steel plate with plastic casing	Steel plate with plastic frame
Display	4 × 20 Characters (alphanum.), background lighting	4×20 Characters (alphanum.), background lighting
OUTPUT		
Output voltage	8 to 48 AC	8 to 48 AC
Output current (max.)	54	110
Output current (t → ∞)	14 A	30 A
Output current (min.)	2 A	2 A
Energy adjustment	Temperature compensation	Temperature compensation
Welding cable length (m)	3	3, other lengths on request
Welding cable installation	Fixed	Fixed
Welding terminals (mm)	Universal terminal for 4.0 and 4.7	Universal terminal for 4.0 and 4.7
INPUT OF WELDING PARAMETERS		
Barcode with scanner	Yes	Yes
SmartFuse	Yes	Yes
Manual input of the barcode digits	Yes	Yes
Manual input of welding parameters	Yes	Yes
INPUT/MAINS		
Nominal voltage (tolerance) (190 to 300)	230 AC	230 AC
Nominal frequency (tolerance) Hz	50/60 (40 to 70)	50/60 (40 to 70)
Power factor cos φ (phase-angle control)	0.6 to 0.9	0.6 to 0.9
Nominal current A	9	16
Power consumption VA	2000	3680
Length of cord	5	4.5
Plug type	10amp NZ plug	15amp NZ plug

ELECTROFUSION MACHINES

SMARTFUSE APP



The Plasson SmartFuse App, the Electrofusion Studio (EFS), provides the installer a series of steps to follow when installing an electrofusion fitting. Quality information and pictures gathered show that important steps in the electrofusion process have been carried out.

The app also has the ability to record the geolocation of the fitting.

The steps, or profile, can be customised so that the installer only collects the data deemed important by the control box owner. Various screens can be turned on, off or have optional input.

Once the weld is completed, all the data is transferred to a server with a click of a button and can be reviewed from a web browser on a tablet or computer.

Equipment

To use the app you simply need two things;

- A smartphone or tablet with either Android or iOS
- A Plasson (PF) control box with Bluetooth functionality

If you have purchased a Plasson (PF) control box in the last 5 years, it will be upgraded to have Bluetooth functionality FREE OF CHARGE with your next calibration.

All tooling (cutting, peeling, rounding and alignment, wipes) to perform a quality weld are available through Plasson

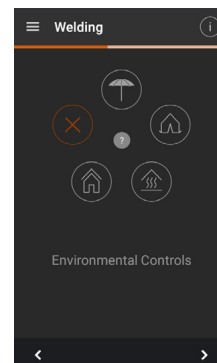


Take a picture of the pipes aligned and clamped.

ON

OFF

Optional



Touch either umbrella, tent, indoors or heating to record any environmental controls in place.

ON

OFF

Optional

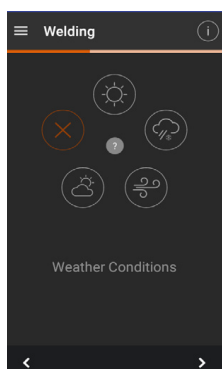


Take a picture/ pictures of the scraped pipe/pipes.

ON

OFF

Optional



Touch either sunny, cloudy, rainy or windy to record weather conditions.

ON

OFF

Optional

To know more detailed info.
scan below QR Code



ELECTROFUSION MACHINES

PLASSON CONTROL BOX

REQUIRED GENERATOR SPECIFICATIONS

Input voltage range	190-300V
Frequency	40-70V
Minimum output	15A at 240V - single phase

Must be able to drive inductive loads.
 Must have phase cut control.
 Mechanically regulated with brushes is the preferred system
 Synchronized generator.
 Minimum 6.5 kVA - Mechanically controlled
 7.5 kVA - Electronically controlled

MINIMUM REQUIRED GENERATOR OUTPUT POWER 240 V, 50HZ, 1-PHASE

DIAMETER	OUTPUT POWER
20-75mm	2 kW
90-160mm	3.2 kW
180-500mm	4.5 kVA (Mechanically controlled) 5 kVA (Mechanically controlled)
> 500mm	6.5 kVA (Mechanically controlled) 7.5 kVA (Mechanically controlled)

POLYCODE 180



PFPOLY180

Working range 20-180mm

Suitable for PE, PP & PPR from 8-48v.

Built in memory of 1000 welds.

- Transport case
- 10 Amp Power Plug
- 4.0-4.7mm universal pins
- Scanner
- Plasson automatic detection (Smart Fuse system)
- Data recording (USB)
- Bluetooth / SmartFuse App
- Manual input of Barcode
- Slow Ramp start
- Dynamic monitoring of Plasson fittings

POLYCODE 400



PFPOLY400

Working range 20-400mm

Suitable for PE, PP & PPR from 8-48v.

Built in memory of 1000 welds.

- Transport case
- 15 Amp Power Plug
- 4.0-4.7mm universal pins
- Scanner
- Plasson automatic detection (Smart Fuse system)
- Data recording (USB)
- Bluetooth / SmartFuse App
- Manual input of Barcode
- Slow Ramp start
- Dynamic monitoring of Plasson fittings

ELECTROFUSION MACHINES

ELECTROFUSION MACHINES

SMARTFUSE 355



PFSMARTFUSEUSB4.0

Working range 20-355mm
(Plasson fittings only)

For Plasson "SmartFuse" fittings only.

Built in memory of 500 welds.

Standard Composition:

- Transport case
- 4.0-4.7mm universal pins
- Plasson automatic detection (Smart Fuse system)
- Data recording (USB)
- Bluetooth / SmartFuse App
- Slow Ramp Start
- Dynamic monitoring of Plasson fittings

POLYMATIC PLUS (USB + BLUETOOTH)



PFPOLYMATICPLUSBT/V3

Working range 20-800mm

Suitable for PE, PP & PPR from 8-48v.

Built in memory of 1000 welds.

Standard Composition:

- Transport case
- 4.0-4.7mm universal pins
- Scanner
- Plasson automatic detection (Smart Fuse system)
- Data recording (USB)
- Bluetooth / SmartFuse App
- Manual input of time and voltage option.
- 15 amp Power Plug.
- Slow Ramp Start
- Dynamic monitoring of Plasson fittings

POLY CONTROL PLUS (USB + BLUETOOTH) V2.0



POLYCONTROLPLUSV2-4.0

Working range all sizes

Suitable for PE, PP & PPR from 8-48v.

Built in memory of 1000 welds.

Standard Composition:

- Transport case
- 4.0-4.7mm adaptor pins
- Bar Code pen
- Plasson automatic detection (Smart Fuse system)
- Data recording (USB)
- Bluetooth / SmartFuse App
- Manual input of time and voltage option
- 15 amp Power Plug.
- Slow Ramp Start
- Dynamic monitoring of Plasson fittings

TOOLS

PE PEELING TOOLS

PLASSON PES PIPE END PEELER SDR11 WITH CORDLESS DRILL



- Suitable for several pipe dimensions by changing the mandrels
- Ovality compensation
- Working range 25-75mm SDR11
- Compatible with common cordless screwdrivers
- Suitable for Pipe & Spigot fittings
- Mandrels for other SDR are available on request
- Kit includes Bosch hand-held drill

Working range 25-75mm (SDR11)

PF44200S101

PLASSON RATIONAL PIPE END PEELING TOOL



- Covers a range of pipe diameters.
- Rapid assembly on pipe end.
- Consistent peel depth.
- Ovality compensation.

PF44200015	63-200mm
PF24201003	Spare blade for 90-315mm peeler
PF24201005	Spare blade for 63-200mm peeler
PF24201008	Spare blade for 315 and 400mm peeler

PLASSON PIPE END PEELER



- Covers a range of pipe diameters.
- Rail design allows for use on spigot fittings
- Rapid assembly on pipe end.
- Consistent peel depth.
- Ovality compensation

PF44200027/1	90-315 mm (PE-X)
PF44200016/1	180-400 mm (PE-X)

SPARE BLADE

PF24201008	Carbide peeling blade, (PES 3), narrow
-------------------	--

PLASSON ROTATIONAL PEELING TOOL



- Covers a range of pipe diameters.
- Provides consistent peel depth.
- Used on pipe ends and saddles.
- Ovality compensation.

PF44200031	20-125mm
PF44200014	90-315mm
PF24201004	Spare blade for 125mm peeler
PF24201003	Spare blade for 315mm peeler

PLASSON U PEELER



- Compact tool.
- Rapid assembly on pipe.
- Consistent peel depth.
- Ovality compensation.
- Fixed pipe diameter.

PF44800063	63mm
PF44800075	75mm
PF44800090	90mm
PF44800110	110mm
PF44800125	125mm
PF44800140	140mm
PF44800160	160mm
PF44800180	180mm
PF44800200	200mm
PF44800225	225mm
PF44800250	250mm
PF44800280	280mm
PF44800315	315mm

SPARE BLADES

PF24201004	63-180mm
PF24201003	200-315mm

NEW SADDLE PATCH PEELER



PF44200060

Size Range 110-1200mm

- For saddles only
- Ovality / Flat Spot Compensation

TOOLS

PE PEELING TOOLS

BATTERY POWERED SADDLE PEELER



- Battery charger-2 batteries
- Transport suitcase
- Collection bag

Battery powered patch peeler suitable for saddle peeling only.

PF44200026

Size Range - 110mm - 1600mm

PLASSON ROTATIONAL CHAIN PEELING TOOL



- Covers a range of pipe diameters.
- Provides consistent peel depth.
- Used on pipe ends and saddles.
- Ovality compensation.

PF44200013	110-400mm
PF44200009	250-800mm
PF44200010	Extension links 900-1000mm
PF24201003	Spare blade

PLASSON BATTERY POWERED CHAIN PEELER



A new battery powered solution for fast, efficient preparation of large bore PE pipe for electrofusion welding.

The chain peeler with larger blade replaces hand powered tools to remove the oxidised and contaminated outer layer on PE pipe by peeling a consistent 0.2 - 0.3mm layer from the pipe surface.

Supplied with two quick change batteries and 230 V charger.

PF44200036	400-800mm
PF24201003	Spare blade
PF2006050	Extension Kit (900-1000mm)

TOOLS

ALIGNMENT TOOLS

PLASSON PIPE SUPPORT



PF44601003	DN32-225mm	590mm x 790mm
	footprint, when erected by 1065mm high	
PF44601007	DN200-1400mm	800 x 340 x 670mm

PLASSON PIPE PULLING CLAMP SET



Pipe Clamp 250 - 800mm

PF44300026

Includes:

- 2 complete clamps each with a pulling clamp
- 1 fixed clamp and pulling shoes for couplers

Greatly assists positioning of slip couplers.

PLASSON QUICK ALIGNER



PF44300000	Working range 16-63mm
PF44300001	Working range 32-110mm
PF44300009	Working range 63-225mm

- Adjustable to suit couplers, reducers, 22.5° 45° & 90° elbows and tees.
- Adjustable to suit couplers, reducers, 22.5° 45° & 90° elbows and tees.
- Promotes restraint during the electrofusion process.
- Infinitely variable grip clamps to suit any combination of sizes, 16-63mm.
- Quick tightening operation and Lightweight - easy to use.

PLASSON STRAP ALIGNER



Includes:

4 pipe clamps
2 base bars
Angled adaptor 22.5°, 45° & 90°

PF44300025	Plasson Aligner 250
PF44300023	Plasson Aligner 560

- Used to prevent movement during the weld process.
- A convenient, flexible system for holding PE pipes steady during the electrofusion process.
- Does not assist with rerounding.
- For larger dimensions it is recommended to combine two or more Pipe Clamps.
- Pipe Clamp 110-560mm, 63-250mm

STAR CLAMP



20-63 mm (4-point clamp)

PF44300005

- Quick adjustment
- Multidimensional
- Star clamp, hex key, transport box
- Also available as 2-point clamp and in 20-40 mm
- Packaging Dimensions : 510×260×250 mm

TOOLS

WELDING TERMINAL PIN ADAPTORS

PLASSON ADAPTORS



Adaptor 4.0 lead

4.7 fitting

90° angle (pair)

PF20300004

SMARTFUSE ADAPTORS



Adaptor 4.0 lead

4.7 fitting


90° angle (pair)

PF20200007

TOOLS

SQUEEZE TOOLS

HYDRAULIC SQUEEZE TOOL



Suitability : PE, PE-HD

PF44100004	63-180 mm (SDR11)	495×285×885 mm
PF44100007	75-200 mm (SDR11)	495×285×885 mm

MANUAL SQUEEZE TOOL



Suitability : PE, PE-HD

- Suitable for several pipe sizes and SDRs (depending on the stoppers used).
- Equipped with glide handle

PF44100010	20-63 mm(SDR11/17)	SDR11: 20-63 mm, SDR17: 63 mm
PF44100006	63-90 mm	SDR17: 63 mm, SDR11: 16/20, 32, 40, 50, 63 mm

TOOLS

REROUNDING CLAMPS AND TOOLS

PLASSON REROUNDING CLAMP



PF44602005	63-180mm (deforming force: 0.85 tonne)
PF44602009	250 - 400mm (deforming force 3.5 tonne)
PF44602004	180-315mm (deforming force: 2.2 tonne)

PLASSON HYDRAULIC REROUNDER



450-800mm
PF44602012

For pipe diameters 450-800mm.

Thick wall pipe, simple assembly.

Supplied with transport case.

PLASSON ROUNDING RING



- Re-rounding clamps should be purchased in sets of 2.

Ideal for rerounding large diameter thick wall pipe while it is in the trench. Removes ovality, simple operation.

PF53006063	63mm	PF53006180	180mm
PF53006075	75mm	PF53006200	200mm
PF53006090	90mm	PF53006225	225mm
PF53006110	110mm	PF53006251	250mm
PF53006125	125mm	PF44602315	315mm
PF53006140	140mm	PF44602355	355mm
PF53006160	160mm		

PLASSON HYDRAULIC ROUNDING SHELL



Ideal for rerounding large diameter thick wall pipe while it is in the trench.

Notes:

1 x Hydraulic Jack required for each shell.

2 x Shells required (1 shell each side of fitting).

Use with Pipe Pulling Clamp Set PF44300026.

PF53008013	Hydraulic Jack 315-400mm
PF53008001	Rounding Shell 315mm
PF53008002	Rounding Shell 355mm
PF53008003	Rounding Shell 400mm
PF53008014	Hydraulic Jack 450-630mm
PF53008004	Rounding Shell 450mm
PF53008005	Rounding Shell 500mm
PF53008006	Rounding Shell 560mm
PF53008007	Rounding Shell 630mm
PF53008015	Hydraulic Jack 710-900mm
PF53008008	Rounding Shell 710mm
PF53008009	Rounding Shell 800mm
PF53008010	Rounding Shell 900mm

TOOLS

PLASSON TOPLOAD SADDLE INSTALLATION TOOLING



INSTALLATION REQUIREMENTS

To install a Plasson large bore saddle the following are required:

- A Clamp Kit to suit the outlet size of the saddle
- Strap Kit/Tensioning Tools for outlet sizes DN180 - DN400
- A Core Cutter to core the saddle after welding
- A Drill/Motor to operate the Core Cutter

FAST AND SIMPLE INSTALLATION

Use of an innovative field friendly clamping system:

- Designed to obtain full contact along the welding zone.
- Lightweight.
- No need for additional tools.

UNIVERSAL

Outlets available in DN90, 110, 125, 160, 180, 200, 225, 250, 315, 400 and Female BSP 2" thread.

PLASSON SPLITTABLE SADDLE CLAMP KIT



PF44701003

Saddle outlet: DN90 - DN160.

Includes:

- Splittable plates: DN90, DN110, DN125 & DN160
- Pressure test spigot removal tool
- Straps
- Tensioning tools
- Rounding ring
- Transport case

PLASSON CORE CUTTING KIT



Saddle outlet: DN90 - DN160

PF44702000

Please note: drills not included

Includes:

- 1x DN90 Core cutter
- 1x Centre drill bit
- 1x DN110 Core cutter
- 1x Drill chuck connector
- 1x DN125 Core cutter
- 1x Connector for SDS-Plus
- 1x DN160 Core cutter
- 1x Transport case

PLASSON DRILLS DN90 - DN250 OUTLET



for use up to DN250mm.

PF44702999

BE75-X3 Quick drilling machine with modified 225Nm gear including hexagon bit and adaptor for core cutter.

TOOLS

PLASSON TOPLOAD SADDLE INSTALLATION TOOLING

PLASSON SPLITTABLE SADDLE CLAMP SETS



PF44701207	Saddle outlet: DN180/DN200	<ul style="list-style-type: none"> • Splittable plate: suits DN180 or DN200 • Rounding ring and adapters • Transport case
PF44701250	Saddle outlet: DN225/DN250	<ul style="list-style-type: none"> • Splittable plate: DN250 • Rounding ring and adapter • Transport case
PF44701227	Saddle outlet: DN225, SDR17	<ul style="list-style-type: none"> • Splittable plate: DN225, SDR17 • Pressing tool • Transport case
PF44701315	Saddle outlet: DN280 / DN315	<ul style="list-style-type: none"> • Splittable plate: DN280 or DN 315 • Pressing tool • Transport case
PF44701400	Saddle outlet: DN355 / DN400	<ul style="list-style-type: none"> • Splittable plate: DN355 or DN400 • Pressing tool • Transport case

PLASSON STRAP KIT/TENSIONING TOOLS



PF44701009

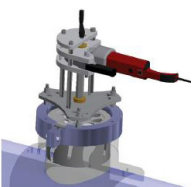
Strap Kit/Tensioning Tools.

All clamp kits for pipe mains DN180-DN900.

Includes:

- 3 x straps
- 3 x ratchets
- Torque wrench
- Pressure test spigot removal tool
- Transport case

PLASSON MOTOR MOUNTING CLAMP



PF2012032	DN250
PF2012033	DN315
PF2012034	DN400

PLASSON LARGER BORE CORE CUTTERS



Includes : Drill adaptor and case.
Please note: drills not included.

PF44702143	Saddle outlet DN180
PF44702159	DN180 core cutter, borehole 143mm
PF44702179	Saddle outlet DN200
PF44702199	DN200 core cutter, borehole 159mm
PF44702199	Saddle outlet DN225
PF44702199	DN225 core cutter, borehole 179mm
PF44702199	Saddle outlet DN250
PF44702233	DN250 core cutter, borehole 199mm
PF44702233	Saddle outlet DN280
PF44702251	DN280 core cutter, borehole 233mm
PF44702251	Saddle outlet DN315
PF44702283	DN315 core cutter, borehole 251mm
PF44702283	Saddle outlet DN355
PF44702319	DN355 core cutter,
PF44702319	Saddle outlet DN400
PF44702319	DN400 core cutter, borehole 319mm

PLASSON OUTLET MOTOR



DN250 - DN400

PF44702911

TOOLS

HOT TAPPING TOOL

HOT TAPPING TOOL AS4087 PN16 FLANGE DN150 WITH 230V MOTOR



PF44705001

- The drive offers a high torque at low RPM.
- Can drill pressurised plastic pipes with a DN150 ISO-flanged saddle up to PN16.
- The hot tapping of pressurized PE pipes can only be done after the welding of the saddle and a following pressure test.
- The geometry of the core cutters (diameter and length) is attuned to the available.
- Plasson saddles so that after drilling, the full inner diameter of the branch available can be used (full bore).

TOOLS

TOOLS FOR WASTEWATER SADDLES

PLASSON TOOL FOR WASTEWATER SADDLE 160



PF44700001

Main pipe sizes DN225-DN560

Please note: Drill not included

- 160mm Flexible outlet saddle clamp Kit.
- Saddle clamp unit including clamp and straps

PLASSON FLEX RESTRAINT INSTALLATION KIT



PFFLEXRTE504E

160-1600mm

PLASSON WASTEWATER CLAMPING AND CUTTING TOOL SET 110



PF44703001

suit mains pipe sizes DN160-DN315

110mm X 45 degrees fixed outlet saddle clamp kit
Includes:

- Topload splittable clamp unit
- Straps

SENSOR SADDLE CLAMPING TOOL



PF44706K000

Dimension Range:110-1200 mm / 4-48" IPS

- Adapter rings from 110 mm to 1200 mm
- Clamp body, Clamping screw SW18
- Drill 13,5 mm for plastic
- Strap ratchet 50 mm
- Ratchet strap 50 mm
- Plastic suitcase, Instruction manual

TOOLS

RULLING AND MARKING

PLASSON MAGNETIC CIRCULAR PIPE RULER



Up to 800mm

PF44402001

PI TAPE



Quick and easy measurement of pipe diameter and circumference.

PF55003001	20-700mm with Vernier 0.1mm
PF55003000	20-1200mm with Vernier 0.1mm
PFPIPETAPE	20-630mm

MARKING PENS



PF53100018

Broad white marking pens (12pens/1box)

IPA WIPES



IPAWIPES

IPA Wipes 98% IPA, 120 per tub

PIPE OVALITY / FLAT SPOT GAUGE



Other sizes are available on request.

PIPEGAUGE/315	315MM
PIPEGAUGE/355	355MM
PIPEGAUGE/400	400MM
PIPEGAUGE/450	450MM
PIPEGAUGE/500	500MM
PIPEGAUGE/560	560MM
PIPEGAUGE/630	630MM
PIPEGAUGE/710	710MM
PIPEGAUGE/800	800MM

PLASSON PIPE BEVELLER



PF53004002 20 - 250mm

Beveler only needs a few turns around the pipe to make the 15° smooth bevel.

TOOLS

CUTTING TOOLS

SHEARS

Essential for the manual cut of plastic pipes
Shears made entirely of steel.



Up to 63mm

PF53000007

ROTATIONAL PIPE CUTTER



- Rotational pipe cutter with quick adjustment, reversible blade, Clean cut.

PF44400004 63-225mm

PF44400005 110-315mm

Replacement Blade to the rotational pipe cutter.

PF12503010/3

GUILLOTINE PIPE CUTTER



- For several pipe dimensions
- Special cutting blade cuts the pipe

Dimension Range:
63-225 mm / SDR11
3-8 IPS
3-6 DIPS

PF44400010

PLASSON ROTATIONAL PIPE CUTTER (S-TYPE)



- These are professional tools, essential for the manual cut of plastic pipes up to 160mm.
- The pipe cutters can be fitted with various special blades with appropriate cutting heights and penetration capacities to cut pipes of different materials.

PF53001004 Rotational Pipe Cutter 20 - 75mm

PF53001001 Rotational Pipe Cutter 50 - 140mm

PF53001002 Rotational Pipe Cutter 90 - 160mm

Replacement Blade to the rotational pipe cutter (s-Type).

PF53001005 Rotational Pipe Cutter Blade - 20 - 75mm

PF53001003 Rotational Pipe Cutter Blade - 50 - 140mm

PF53001003 Rotational Pipe Cutter Blade - 90 - 160mm

PLASSON ROTARY CIRCULAR SAW



- For safe cutting of PE pipes
- Ensures square cut – essential for electrofusion success
- No contamination which can happen with chain saws
- Chain guided
- On/off safety foot switch
- Can be used on pipes in the dimension range 250-1200mm.

PF44401002 250 - 500mm

PF44401001 500 - 1200mm

PE PRESSURE BUTT FUSION MACHINES

PLASSON BUTT FUSION MACHINES (CNC)



Plassons renowned quality and innovation now extends to a complete range of German engineered CNC & Manual butt fusion machines.

Asmuss are the New Zealand agents for Plasson and have factory trained technicians on staff. All machines are backed by a 2-year warranty and full training on their use and care is offered as part of the sale.

TECHNICAL DATA				
	PFS-160 CNC	PFS-250 CNC	PFS-315 CNC	PFS-355 CNC
Dimension range	40-160	75-250	90-315	90-355
With optional reductions* (mm)				
Suitable for pipes made of	HDPE, PP			
Nominal voltage (tolerance)	230 AC	230 AC	230 AC	230 AC
Nominal frequency (tolerance) [Hz]	50 (± 15 %)	50 (± 15 %)	50 (± 15 %)	50 (± 15 %)
Nominal current (fuse) [A]	1x16	1x16	1x16	1x16
Total power consumption (V)	2900	3700	4700	4700
International protection	IP44	IP44	IP44	IP44
Appliance class	1	1	1	1
Dimension Range	160 mm (63-140 mm with reductions)	250 mm (90-225 mm with reductions)	315 mm (90-280 mm with reductions)	355 mm (90-315 mm with reductions)
	Inch IPS/DIPS reductions are available on request			

HYDRAULIC UNIT AND CONTROL PANEL	
Maximum pressure (bar)	140
Revolutions per minute (U/min)	1450
Hydraulic oil: Amount	1L
Hydraulic oil: Type	DIN 515224/2, ISO VG46
Dimensions (mm)	430×350×520
Weight (kg)	33

HYDRAULIC UNIT AND CONTROL PANEL INPUT/MAINS	
* Nominal voltage (tolerance)	230 AC (± 15 %) V
* Nominal frequency (tolerance)	50 (± 15 %) Hz
Power consumption	1100 W
Length of cord	4m
Plug type	Euro Schuko plug
Sensors	Pressure sensor, movement sensor

PE PRESSURE BUTT FUSION MACHINES

PLASSON BUTT FUSION MACHINES (CNC) - FEATURES

PLASSON CNC MACHINES 160 – 355MM

- Compact Chassis for intrench use.
- Easily replaceable/Recoatible Teflon plates on the heater plate – No more sending the heater plate away for re-coating.
- Plassons heater plate foil technology – Fast heating – No dead spots – Low power draw.
- Compact chainless Drive Milling Cutter.
- Pre-Loaded ISO 21307 S/LP ISO Standard (Specially optimised for the highest of weld quality).
- Weld data entry via barcode pen.
- Independent heater plate control – Ability to turn off the heater plate in the cool down cycle.
- Manual override of the CNC Control if needed.
- Milled from Tube Aluminium inserts – No Voids / Absolute strength..
- USB Data Recording

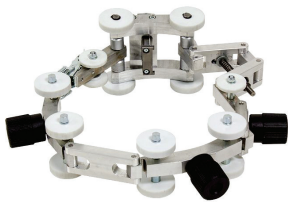
PLASSON CNC MACHINES 500-630MM

- Compact Chassis for intrench use.
- Teflon Coated Heater Plate.
- Powerful Milling Cutter.
- Pre-Loaded ISO 21307 S/LP ISO Standard (Specially optimised for the highest of weld quality).
- Weld data entry via barcode pen.
- Independent heater plate control – Ability to turn off the heater plate in the cool down cycle.
- Manual override of the CNC Control if needed.
- Milled from Tube Aluminium inserts – No Voids / Absolute strength.
- USB Data Recording

BUTT FUSION TOOLS

PLASSON BUTT FUSION TOOLS

EXTERNAL BEAD REMOVER



Suitability: PE

PF44600001

For several pipe dimensions, quick setup
 90-315 mm (optionally extensible to 630 mm)

PIPE ROLLER



1000 mm, adjustable

PF44601002

Height adjustable approx. 10 cm
 Quick adjustment
 Covers a large dimension range of pipes

PIPE ROLLER WITH RUBBER ROLLER



315 mm with rubber roller

PF44600001

The Pipe Roller 315 mm is used to position and maintain the mobility of plastic pipelines, especially when using butt fusion machines.

MANUAL BUTT FUSION MACHINES

PLASSON MANUAL BUTT FUSION MACHINE



Plassons renowned quality and innovation now extends to a complete range of German engineered CNC & Manual butt fusion machines.

Asmuss are the New Zealand agents for Plasson and have factory trained technicians on staff. All machines are backed by a 2-year warranty and full training on their use and care is offered as part of the sale.

TECHNICAL DATA						
	PFS-160 M	PFS-250 M	PFS-315 M	PFS-355 M	PFS-500 M	PFS-630 M
Barcode Input	No	No	No	No	No	No
Data Recording	No	No	No	No	No	No
Hydraulic Unit	Manual	Manual	Manual	Manual	Manual	Manual
Input Voltage	230 V	230 V	230 V	230 V	400 V	400 V
Input Frequency	50 Hz	50 Hz	50 Hz	50 Hz	50 Hz	50 Hz
Delivery Scope	Base machine, hydraulic unit, trimmer, heating element					
Dimension Range	160 mm (63-140 mm with reductions)	250 mm (90-225 mm with reductions)	315 mm (90-280 mm with reductions)	355 mm (90-315 mm with reductions)	500 mm (280-450 mm with reductions) extendable to 200-450mm on request	630 mm (315-560 mm with reductions)
	Inch IPS/DIPS reductions are available on request					

***Information on request for 800mm to 1200mm machines.**

MANUAL BUTT FUSION MACHINES

PLASSON MANUAL BUTT FUSION MACHINE- FEATURES

PLASSON MANUAL MACHINES 160 – 355MM

- Compact Chassis for intrench use.
- Easily replaceable/Recoatable Teflon plates on the heater plate – No more sending the heater plate away for re-coating.
- Plassons heater plate foil technology – Fast heating – No dead spots – Low power draw.
- Compact chainless Drive Milling Cutter.
- Electrohydraulic Manual Controller.
- Milled from Tube Aluminium inserts – No Voids / Absolute strength.

PLASSON MANUAL MACHINES 500-1200MM

- Compact Chassis for intrench use.
- Teflon Coated Heater Plate.
- Powerful Milling Cutter.
- Electrohydraulic Manual Controller.
- Milled from Tube Aluminium inserts – No Voids / Absolute strength.

GEBERIT ELECTROFUSION MACHINE

GEBERIT ELECTROFUSION MACHINE - DRAINAGE

GEBERIT ESG 3 PE DRAINAGE MACHINE



GEBERITESG3

Suitable for Geberit drainage couplers.

Working range 40-315mm

Standard Composition:

Transport case

Leads for 40-160mm & leads for 200-315mm Couplers.

3 Link leads for welding up to 3 fittings 40-110mm at once.

GEBERIT EPIPE SCRAPER SET



- For removing the oxide layer on Geberit HDPE pipes and fittings of dimensions \varnothing 56 mm – 110 mm
- Fast and efficient pipe preparation
- Can be used with conventional cordless drill drivers
- Suitable for working in narrow spaces that are difficult to access
- Easy care and maintenance with replaceable parts

TBC

GEBERIT TOOLS

PE PEELING TOOL

HAND PEELER



Drainage pipework only.

PF53002001

1½" Blade

PF53002003

2½" Blade

SILICON CARBIDE OPEN NYLON MESH



FPEDOC

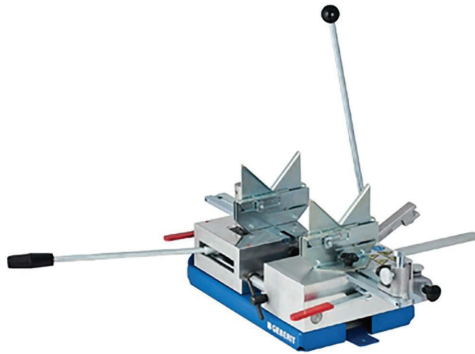
1 ½" x 5 Yards

For preparing Geberit PE Drainage Pipe for electrofusion.
Suitable for pipe sizes 40-125mm .

GEBERIT BUTT WELDERS

BUTT WELDING TOOLS

GEBERIT WELDING MACHINE MEDIA



For butt welding Geberit HDPE and Geberit Silent-db20 pipes and fittings.

Characteristics:

- Robust base element for welding accessories up to \varnothing 160 mm
- Retainer for welding plate support and plane
- CE-compliant
- Weight 18 kg
- Pipe support prisms, \varnothing 50–160 mm
- Pipe supports, \varnothing 75–125 mm
- Welding plate support
- Transport case made of wood

GEBERIT WELDING MACHINE UNIVERSAL



For butt welding Geberit HDPE and Geberit Silent-db20 pipes and fittings.

Characteristics:

- Robust base element for welding accessories up to \varnothing 315 mm
- Retainer for welding plate support and plane
- CE-compliant
- Weight 60 kg
- Pipe support prisms, \varnothing 50–160 mm
- Pipe support \varnothing 75–125 mm, with base
- Pipe support prisms, \varnothing 200 mm
- Welding plate support
- Accessories case
- Transport case made of wood

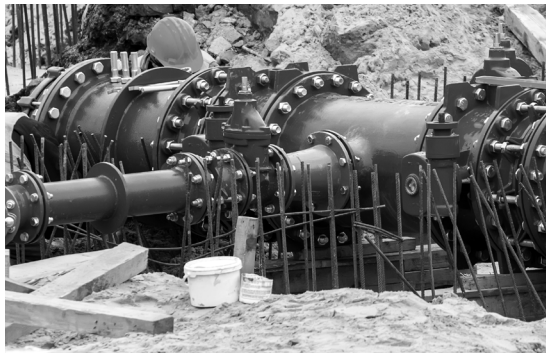
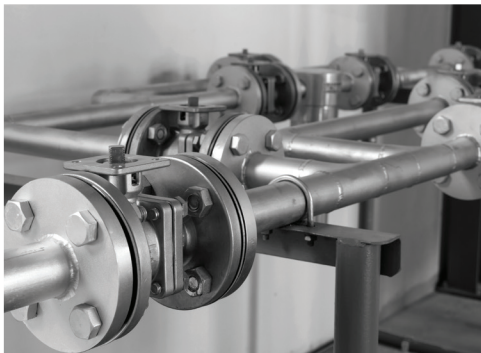
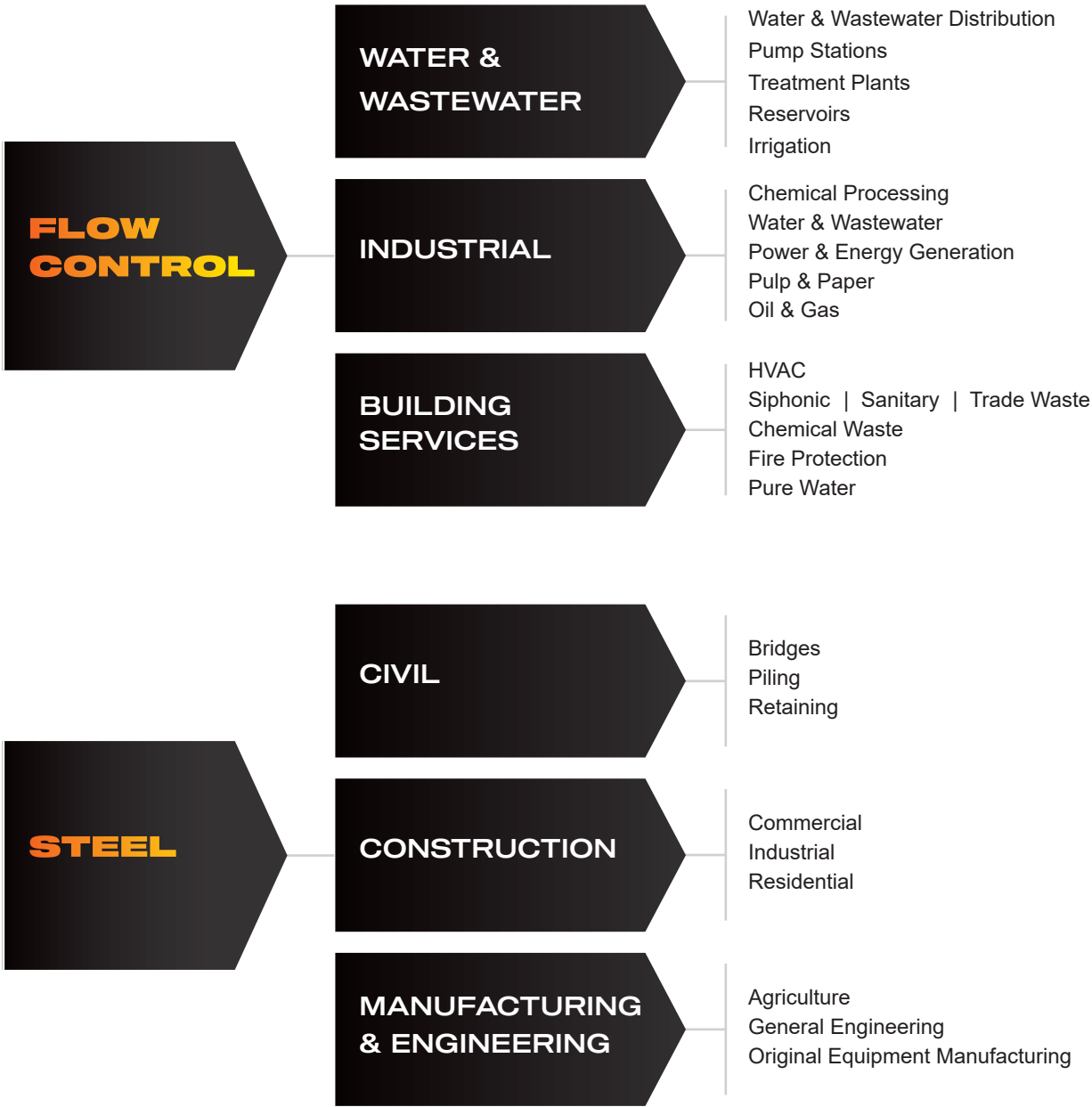
ACCESSORIES FOR BUTT-WELDING TOOLS

	Electric plane d40–160, 230 V		Electric plane d40–160, 120 V	Electric plane d40–200, 230 V		Electric plane d200–315, 230 V
Nominal voltage	230 V AC		120 V AC	230 V AC		230 V AC
Dimension	d40-160		d40-160	d40-200		d200-315
HSS ¹⁾	359.046.xx.1	-	359.046.1P.1	359.082.xx.1 358.759.00.1	-	359.060.xx.1
Blade, HSS ¹⁾	358.759.00.1 358.760.00.1	-	358.759.00.1 358.760.00.1	358.760.00.1 357.600.00.1 357.599.00.1	-	357.751.00.1
Blade, HM ²⁾	-	240.474.00.1	240.474.00.1	-	240.474.00.1	

¹⁾ for Geberit PE

²⁾ for Geberit PE and Geberit Silent-db20

WHAT WE DO.





WHAT MAKES US DIFFERENT?

We are problem solvers — that's our core business — and we represent some of the world's best steel and flow control brands and products. Even though our product range is extensive, what makes us different is our people.

We are responsive and easy to deal with; just ask our customers. We build long-term relationships and know our products better than any of our competitors.

By combining our broad product range with local knowledge we offer our clients comprehensive, tailored solutions.

We believe that promptly delivering quality makes infrastructure and construction in New Zealand stronger.

When our customers and suppliers succeed, we succeed.

**WE'RE FOCUSSED ON CREATING A STRONGER
NEW ZEALAND BY HELPING OUR CUSTOMERS,
COMMUNITIES & PEOPLE TO SUCCEED.**

THE SMARTER CHOICE.

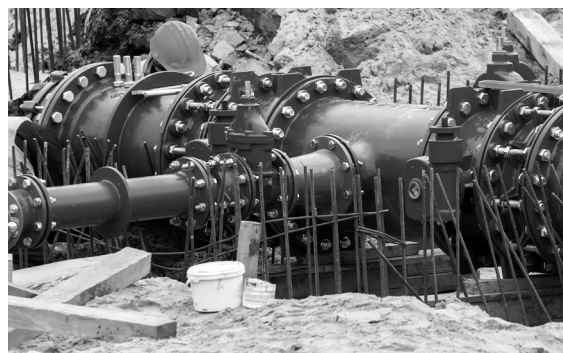
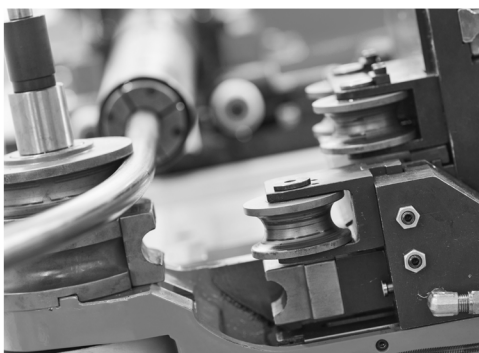
MACHINES & TOOLING

OUR BRANDS.

ASMUSS SOURCES TOOLS AND MACHINERY FROM A RANGE OF QUALITY MANUFACTURERS TO PROVIDE THE BEST OPTIONS FOR OUR CUSTOMERS VARYING NEEDS.

Before making your selection please contact our team so we can recommend the appropriate tools and machines that best suit your requirements. Not all parts shown in this catalogue are held in stock.

Please request pricing, technical advice and availability from our customer service team on 0800 ASMUSS.



MACHINES & TOOLING

SERVICING AND CALIBRATION.

ASMUSS HAS AN IN-HOUSE SERVICE DEPARTMENT WITH TRAINED AND CERTIFIED TECHNICIAN, THAT PROVIDE SERVICING, CALIBRATION, TROUBLE SHOOTING AND REPAIRS FOR ALL THE TOOLS WE SUPPORT WHICH INCLUDE PLASSON, GROSSENBACHER...

Our service workshop has manufacturers-approved testing and calibration equipment and we hold a range of spare parts, so we can get your machines and tools back in the field as quickly as possible, all repairs are covered by PFS warranty.

As authorised repair agents we extend our services to all repairs and maintenance even for items that have not been purchased through Asmuss.



THE SMARTER CHOICE.

ORDER FORM



Customer: _____

Contact: _____

Contact: _____

Fax: _____

Quote:

Deliver to:

[illegible]

NOTES



ORDER FORM



ASMUSS
STEEL & FLOW CONTROL

Customer: _____

Contact: _____

Contact: _____

Deliver to: _____

Fax: _____

Quote: _____

[illegible]

NOTES



MACHINES & TOOLING

For the most up-to-date pricing and information, please Contact us on:

E **flowcontrol@asmuss.co.nz**





ASMUSS

STEEL & FLOW CONTROL

AUCKLAND

34 Arrenway Drive
Albany
Auckland 0632
PH +64 9 477 2320

KAWERAU

KEA 2 Industrial Park
Manukorihi Drive
Kawerau 3127
PH +64 7 323 6198

TAUPO

464 Rakaunui Road
Rotokawa
Taupo 3378
PH +64 7 377 8416

CHRISTCHURCH

60 - 70 Detroit Drive
Rolleston
Christchurch 7614
PH +64 3 347 1568

6 Gabador Place
Mount Wellington
Auckland 1060
PH +64 9 573 0002

WELLINGTON

11-13 Gough Street
Lower Hutt
Wellington 5010
PH +64 4 939 6699

NEW PLYMOUTH

82 De Havilland Drive
Bell Block
New Plymouth 4312
PH +64 6 755 2570

5 Paradyne Place,
Wigram,
Christchurch 8042
PH +64 3 348 4087

DRURY DC

17 Ross Stevenson Road
Drury
Auckland 2579

TAURANGA

40 Portside Drive
Mt Maunganui
Tauranga 3116
PH +64 7 574 6774

NELSON

8 Saxton Road West
Stoke
Nelson 7011
PH +64 3 538 0351

DUNEDIN

3 White Street
Dunedin Central
Dunedin 9016
PH +64 3 477 2323

WAIKATO

40 Bryant Road
Te Rapa
Hamilton 3200
PH +64 7 849 2410

FLOWCONTROL@ASMUSS.CO.NZ

WWW.ASMUSS.CO.NZ