

FLOW CONTROL

WATER & WASTEWATER



We are problem solvers - that's our core business.
We represent some of the best brands in the world
for steel and flow control products.

By combining our extensive product range with our
local knowledge, we offer our clients comprehensive
tailored solutions.

We service the following market segments:

Pump Stations
Treatment Plants
Reservoirs
Irrigation
Water & Wastewater Distribution

OUR STORY.

We're a successful New Zealand owned business that's been trusted to deliver for our customers for 100 years.

Founded in 1920, the Asmuss Group has supplied many of the biggest industrial and construction projects in New Zealand and is one of the largest privately-owned companies in its field.

A focus on quality products, technical excellence and exceptional customer service has been the cornerstone of our philosophy.

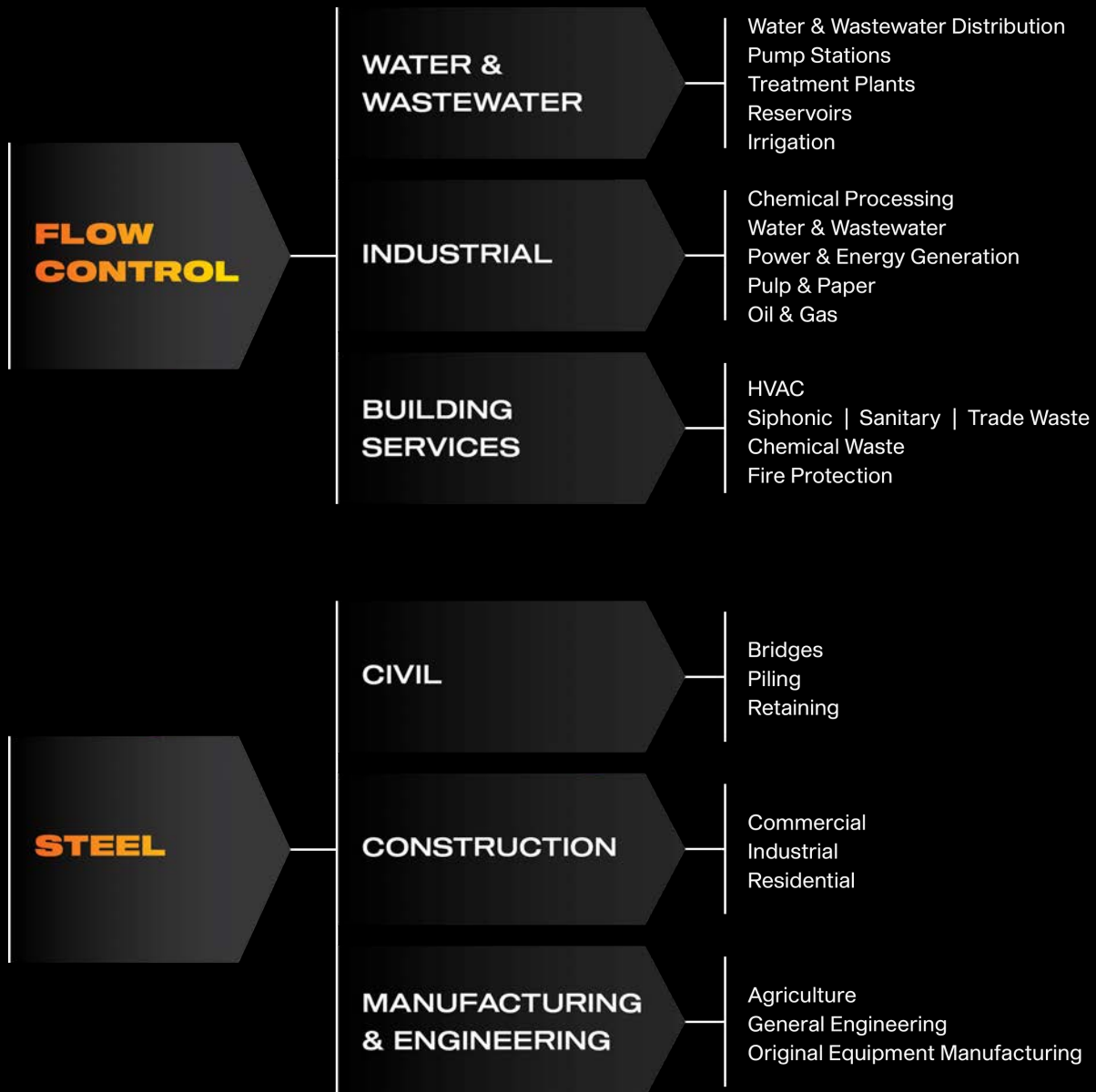
We believe longevity in business is about having a true partnership with our valued suppliers and customers, going through the ups and downs, and succeeding together.

OUR EXPERTISE.

- We understand your market and it's unique challenges
- Our specialist team sources the best brands around the globe
- We coordinate our resources across all sites to ensure you receive the optimal product combination tailored to meet your specific requirements
- We offer local technical sales support and installation training
- We have proven experience in supplying products to some of New Zealand's largest infrastructure projects
- We offer pipe and fitting analysis, pre-fabrication and machine servicing



ONE COMPANY, MANY SOLUTIONS.



**WE'RE HERE
TO CREATE
A STRONGER
NEW ZEALAND
BY HELPING
OUR CUSTOMERS,
COMMUNITIES
AND PEOPLE
SUCCEED.**



VALVES.

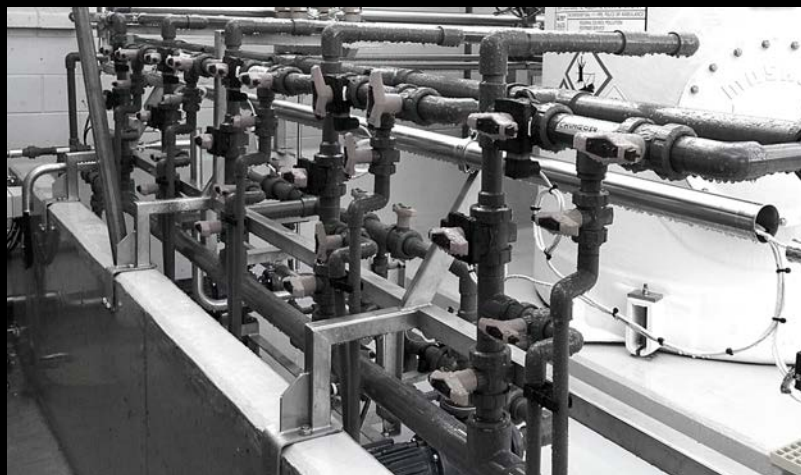
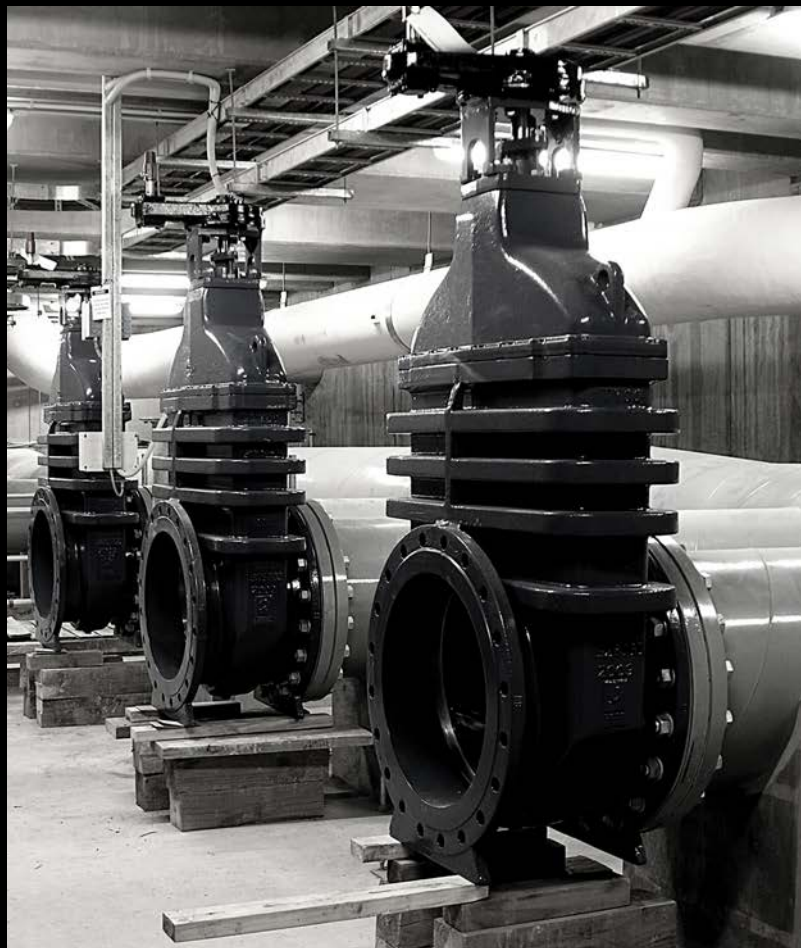
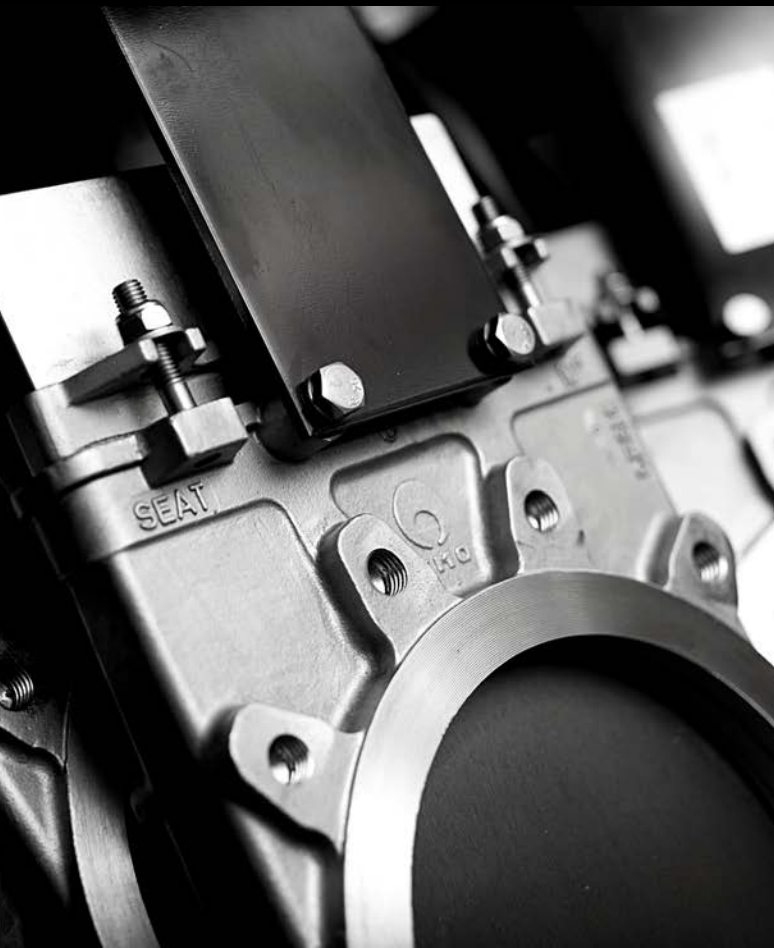
We carry a comprehensive range of valves including:

- Resilient Seated Gate Valves
- Metal Seated Gate Valves
- Knife Gate Valves
- Butterfly Valves
- Globe Valves
- Check Valves
- Ball Valves
- Plug Valves
- Diaphragm Valves
- Cone Discharge Valves
- Submerged Discharge Valves
- Valve Actuation
- Chemical Dosing Valves
- Control Valves
- Pilot Operated Control Valves
- Air Valves
- Pump Control Valves

FITTINGS AND COMPONENTS.

We carry a wide range of repair clamps and couplings suitable for potable water, wastewater and gas applications.

- Polyethylene
- Electrofusion
- Buttweld
- Ductile Iron AS/NZS 2280
- Stainless Steel-Mapress
- ABS
- Sch 80 PVC
- Vari-Gib Couplings
- Repair Clamps
- Dismantling Joints
- Uni-Couplings
- Gaskets
- Stud Bolts





PIPING SYSTEMS.

POLYETHYLENE

Asmuss ADVANTAGE™ is a high strength PE100 piping system and can be used for conveying all types of water and wastewater applications.

Range:

- Asmuss Advantage PE 100 Pipe Size Range: 90mm – 1000mm
- Polyethylene Fittings Size Range: 20mm – 1200mm
- Fabricated Specials
- Tools and Welding Equipment

DUCTILE IRON

It's suitable for installation in greenfield developments or high traffic load areas where it can be laid at a variety of depths or for above ground applications.

Range:

Tyton® Ductile Iron Pipes are available from DN100 – DN750

SUREFLOW Fittings high strength Ductile Iron Flanged and SUREFLOW TYTON JOINT (RRJ)-DN80 - DN750

STAINLESS STEEL-MAPRESS

Geberit Mapress Stainless Steel was developed for drinking water installations in accordance with DIN 1988 / revised standard DIN EN 806 for treated water. The pressing system ensures safe hygiene and corrosion resistance and enables thermal disinfection.

Range:

DN10-DN100

SCHEDULE 80 uPVC

uPVC (un-plasticised Poly Vinyl Chloride) is a light and flexible thermoplastic with excellent corrosion resistance. These properties and high engineering design values make it an ideal material for many and varied application. Schedule 80 uPVC can realise substantial installation and ongoing savings to installations across all industries.

Range:

DN8-DN300

ABS

Acrylonitrile butadiene styrene [ABS] is a homogeneous material with high impact strength and ductility, good chemical resistance, good resistance to environmental stress cracking and excellent resistance to crack propagation.

Other advantages are its suitability for use at low temperatures [-40°C], it is easily recyclable and is non-toxic, and can be regarded as biologically inert.

Range:

DN15-DN300

RECENT PROJECTS.

WESTPORT RAW WATER SUPPLY



This was a complex project involving transferring raw drinking water from the existing intake. There is an existing network of tunnels with the longest of the tunnels measuring 1.2 km long and up to 200m deep, collapsed in the middle leaving the town without a water supply and relying on temporary pumping from a river below the reservoirs.



The conditions were challenging, but our client used a series of trenchless techniques and completed a very technical and successful outcome.

Asmuss were engaged to supply 813mm steel pipe and manufactured 710mm and 630mm polyethylene pipe.

WILLIS STREET EMERGENCY REPAIRS



In December 2019, a major sewer pipeline in Wellington City failed leading to a high volume of sewer being discharged into Wellington Harbour. The project required 800mm polyethylene pipe, electrofusion couplers and flanged connections.



Asmuss was engaged to manufacture the polyethylene pipes and supply the required couplers and connections to repair the pipeline. The project included excavations up to 6 metres deep and Asmuss also supplied steel sheet and beams to enable safe construction activity within the trench.

This project had a short timeframe but Asmuss supplied all items on time, to the client's strict specifications.

PUKEKOHE WASTEWATER TREATMENT PLANT



Watercare upgraded the Pukekohe Wastewater Treatment Plant to ensure they can continue to treat wastewater from a growing population.

Asmuss was engaged to supply a range of Val-Matic Surgebuster Check Valves, Val-Matic Butterfly Valves and Gate Valves.

These essential upgrades will ensure that as Pukekohe and surrounding areas continue to grow Watercare can provide and maintain high quality reliable wastewater services while also protecting the environment.



ASMUSS

STEEL & FLOW CONTROL

AUCKLAND

34 Arrenway Drive
Albany
Auckland 0632
PH +64 9 477 2320

6 Gabador Place
Mount Wellington
Auckland 1060
PH +64 9 573 0002

8 Clemow Drive
Mount Wellington
Auckland 1060
PH +64 9 573 0030

WAIKATO

40 Bryant Road
Te Rapa
Hamilton 3200
PH +64 7 849 2410

KAWERAU

KEA 2 Industrial Park
Manukorihi Drive
Kawerau 3127
PH +64 7 323 6198

WELLINGTON

11-13 Gough Street
Lower Hutt
Wellington 5010
PH +64 4 939 6699

TAURANGA

40 Portside Drive
Mt Maunganui
Tauranga 3116
PH +64 7 574 6774

TAUPO

464 Rakaunui Road
Rotokawa
Taupo 3378
PH +64 7 377 8416

NEW PLYMOUTH

82 De Havilland Drive
Bell Block
New Plymouth 4312
PH +64 6 755 2570

NELSON

8 Saxton Road West
Stoke
Nelson 7011
PH +64 3 538 0351

CHRISTCHURCH

60 - 70 Detroit Drive
Rolleston
Christchurch 7614
PH +64 3 347 1568

DUNEDIN

3 White Street
Dunedin Central
Dunedin 9016
PH +64 3 477 2323

WWW.ASMUSS.CO.NZ